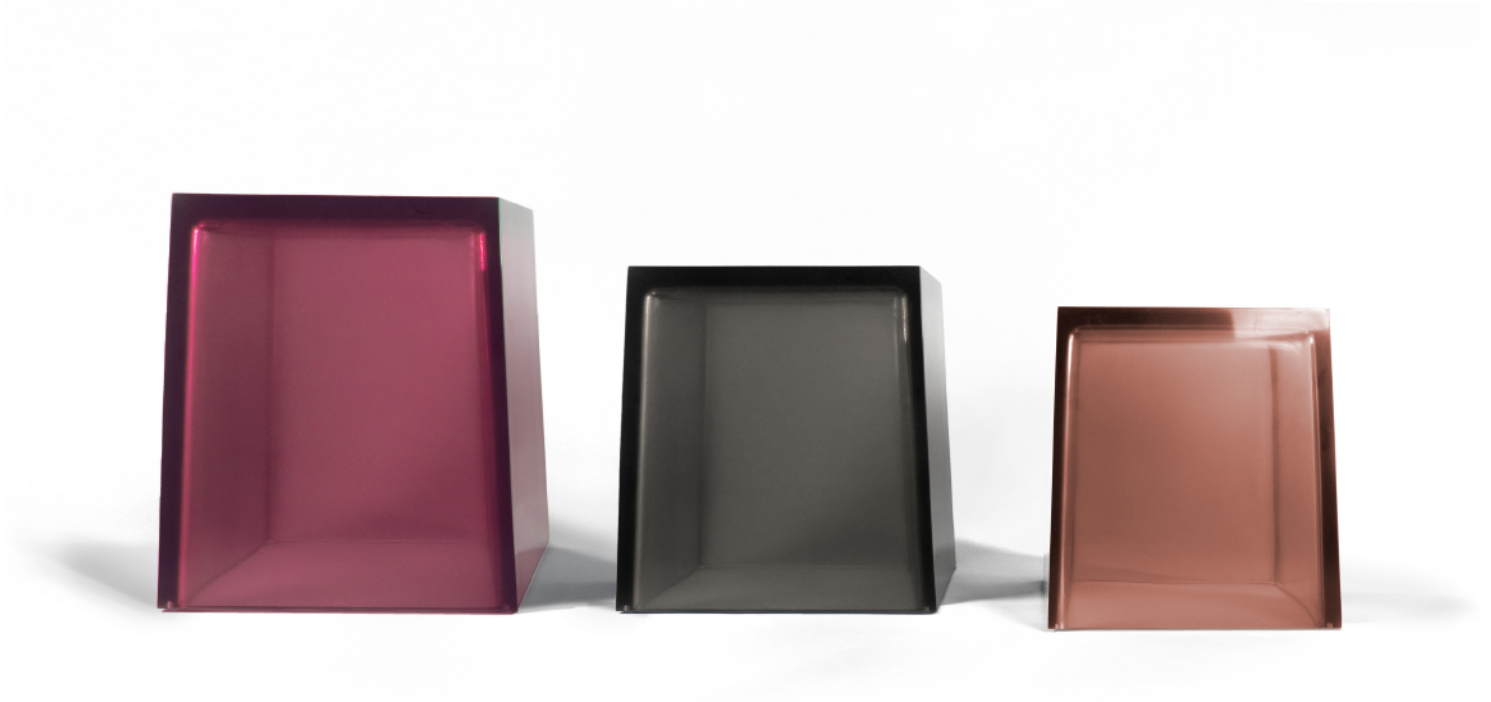


# GAMMA RESIN TABLE COLLECTION



## DESCRIPTION

The inspiration for this table came to us from recollecting disposable camera flashcubes used in amateur photography during the 1970's - a playful little form tragically designed for a single use.

Cast from a single pour of hand tinted resin here in our Toronto studio, this seamless table provides a beautiful splash of transparent light diffusing colour to any room. The upward taper with crisp exterior edges and rounded interior corners make this our version of the classic cube. Offered in 8 colours and three different sizes. Perfect as side tables or creative groupings. This piece is made to order.

## MATERIALS

Epoxy Resin, Pigment

## ORIGIN

Canada

## PRODUCTION

6-8 weeks

## SMALL

15" W X 15" D X 16.5" H

## MEDIUM

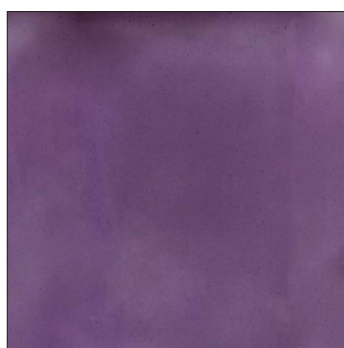
17" W X 17" D X 18.5" H

## LARGE

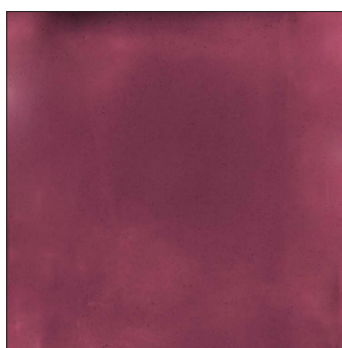
20" W X 20" D X 22"H

# GAMMA TABLES – DEEP TRANSLUCENT COLOURS

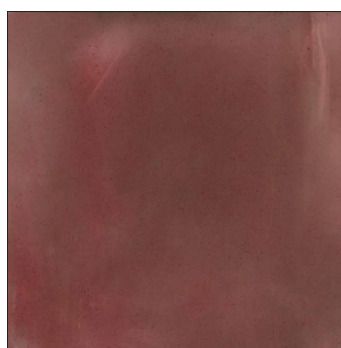
Deep jewel tones in translucent resin.



TOURMALINE



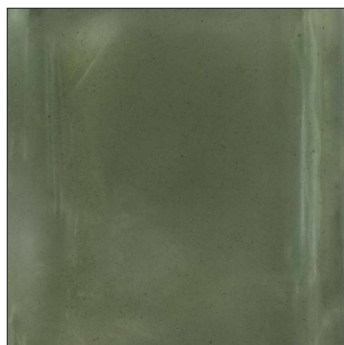
BORDEAUX



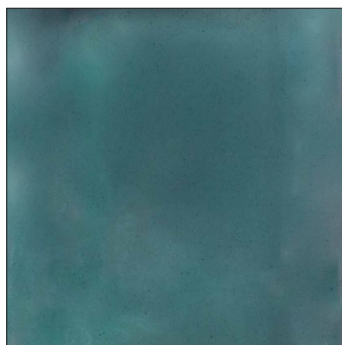
SPICE



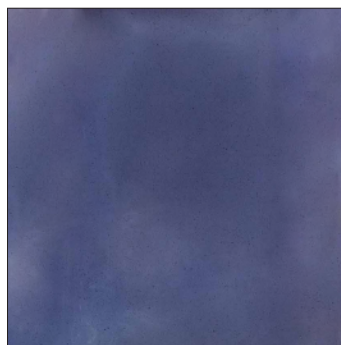
OCHRE



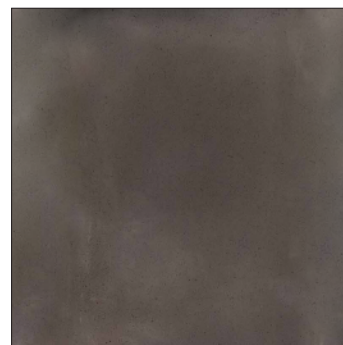
FOREST



OCEAN



TWILIGHT



ROCK

# GAMMA TABLES – LIGHT TRANSLUCENT COLOURS

Mid tones of translucent resin.



LILAC



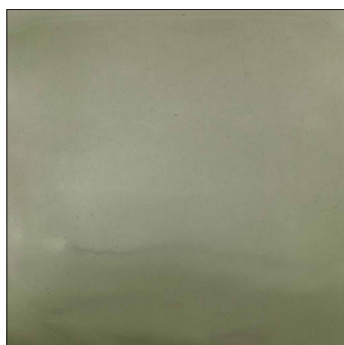
CERISE



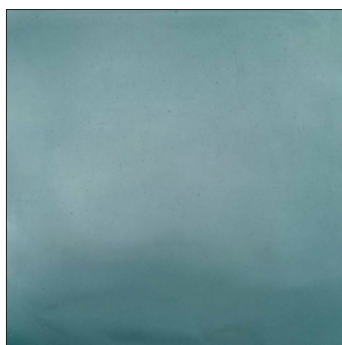
CORAL SPICE



HONEY



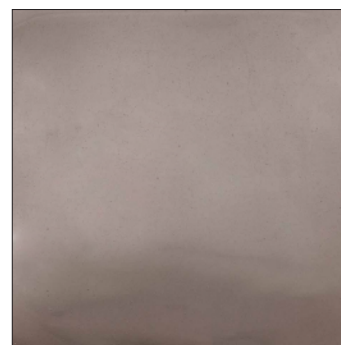
MOSS



SURF



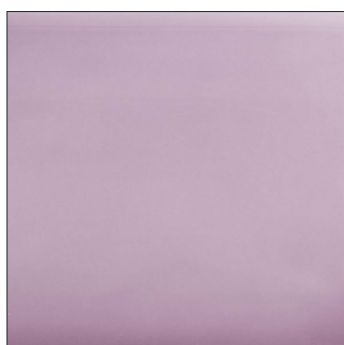
EVE



STONE

# GAMMA TABLES – OPAQUE COLOURS

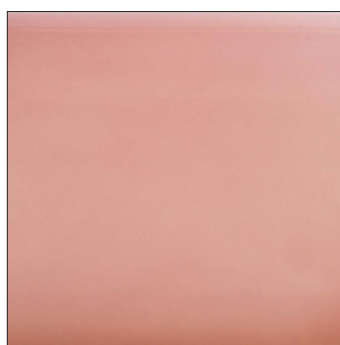
Semiopaque, pastel tones.



THISTLE



BUBBLEGUM



CORAL



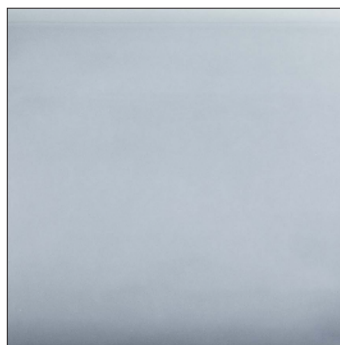
CREME



LICHEN



LAGOON



MIST



PEBBLE